



## Rabbit anti Claudin 1 Polyclonal Antibody

Alternative Name(s): CLDN1

### Order Information

- **Description:** Claudin 1
- **Catalogue:** 500-3414
- **Lot:** See label
- **Size:** 100ug/200ul
- **Host:** Rabbit
- **Clone:** nan
- **Application:** IHC(P)
- **Reactivity:** Hu, Ms, Rt

### **ANTIGEN PREPARATION**

A synthetic peptide from C-terminus of human claudin 1 protein.

### **BACKGROUND**

The claudin superfamily consists of many structurally related proteins in humans. These proteins, which include claudin 1 through 18, are important structural and functional components of tight junctions in paracellular transport. The tight junctions are specialized regions of cell to cell contact. Claudins are located in both epithelial and endothelial cells in all tight junction-bearing tissues. Claudins, which consist of four trans-membrane domains and two extracellular loops, make up tight junction strands. Different tissues exhibit different Claudin composition.

### **PURIFICATION**

The Rabbit IgG is purified by Epitope Affinity Purification

### **FORMULATION**

This affinity purified antibody is supplied in sterile Phosphatebuffered saline (pH7.2) containing antibody stabilizer

### **SPECIFICITY**

This antibody recognizes Claudin 1 protein. It reacts with human, rat and mouse. Others not tested.

### **STORAGE**

The antibodies are stable for 24 months from date of receipt when stored at -20oC to -70oC. The antibodies can be stored at 2oC-8oC for three month without detectable loss of activity. Avoid repeated freezing-thawing cycles.

### **APPLICATIONS/SUGGESTED WORKING DILUTIONS\***

- Western Blot: 0.1-1 µg/ml
- ELISA: 0.01-0.1 µg/ml
- Immunoprecipitation: 2-5 µg/ml
- IHC: 2-10 µg/ml
- Flow cytometry: Not tested
- Molecular Weight: 22.0
- Positive Control: Kidney Tissue
- Cellular Location: Cell Membrane

\*Optimal dilutions should be determined by researchers for the specific applications.

### **FOR RESEARCH USE ONLY.**

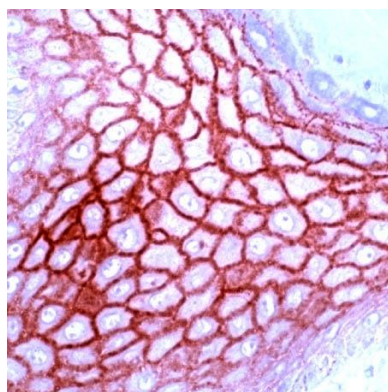
AbboMax, Inc 2528 Qume Drive, Suite 8, San Jose, California 95131, USA  
1 408-573-1898 (Tel). 1 408-573-1858 (Fax). [www.abbomax.com](http://www.abbomax.com) [info@abbomax.com](mailto:info@abbomax.com)

## DATA ATTACHMENTS

**MW (kDa)**      **1**



Western Blot: The Cell lysate derived from 80% confluence -A431 was immunoprobed by Rabbit anti-Claudin 1 (Cat#500-3414) at 1:500. An immunoreactive band is observed around ~22kDa.



Immunohistochemistry: Human skin tissue stained with Rabbit Anti-Claudin 1 antibody (Cat# 500-3414) at 1:200 for 10 min @ RT. Staining of formalin-fixed tissue requires boiling tissue sections in 10 mM Citrate Buffer, pH 6.0 for 10 min followed by cooling at RT for 20 min.

## REFERENCES

### FOR RESEARCH USE ONLY.

AbboMax, Inc 2528 Qume Drive, Suite 8, San Jose, California 95131, USA  
1 408-573-1898 (Tel). 1 408-573-1858 (Fax). [www.abbomax.com](http://www.abbomax.com) [info@abbomax.com](mailto:info@abbomax.com)